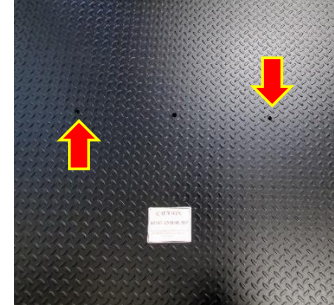


**665 North Reservoir Street  
Lancaster PA 17602  
P: 800.233.0473 717.295.6935  
[sales@pascale.com](mailto:sales@pascale.com)  
Manual 6600-6900-U6600TM2020REV1**

## Unpacking and Startup

### Unpack the Base

- After the metal bands and cardboard are removed from the base, insert two (four on large size 6600 bases) ½" -13 X 1" eye bolts (Not supplied). One inch is the MINIMUM useable length for the bolts, however you may use eyebolts longer than 1".
- Hook a cable or chains to the bolts and lift the base at least one foot high to back the base away from the skid or to remove the skid from underneath the base.



### Scale Base

- The base to indicator interface cable is located underneath the base on the same side as the junction box cover plate with the Pennsylvania Scale Logo.
- The cable is attached to two clips affixed underneath the base to protect it during shipment. Unhook the cable from the clips and uncoil to attach to the indicator.
- NOTE: When the QUICK DISCONNECT option is installed the cable must be connected to a round CPC connection on the backside of the structural tube steel directly behind the junction box.



### Level the Base

- The leveling feet must be turned out at least two turns for proper operation of the base. At this point in the set up procedure, the base may be placed on the floor. Access to the junction box should not be blocked in the event that adjustments to the base are required.
- After the base is on the floor, adjust the leveling feet so that all four feet are in firm contact with the floor.
- NOTE: For the 6600 base to work properly, the base must be supported on the leveling feet. If the leveling feet are not extended far enough and the base is wholly or partially sitting on the steel under frame, the base will not weigh correctly.



## **SPECIFICATIONS**

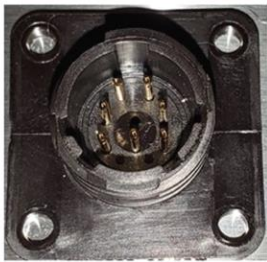
- **CONSTRUCTION:** Heavy Duty Tube Steel Frame and Diamond Plate Deck, Stainless Steel Versions Shot Blast Smooth Deck Plate
- **FINISH:** Durable Powder Coated up to 60" X 60", Epoxy Paint for larger than 60" X 60".  
Stainless models are 304 SS with shot blast finish
- **NTEP:** Class III, 5,000 divisions 90-097A3
- **MEASUREMENT CANADA:** S.WA-4456
- **OPTIONS:**
  - **RAMPS**
  - **PIT FRAMES**
  - **BUMPER GUARDS**
  - **BASE ANCHORS**
  - **FORKLIFT SKIDS**
  - **SPECIAL SIZES and CONFIGURATIONS**
- **Made in the USA**

**NOTE: Please refer to the indicator technical manual for calibration instructions**

### **Pennsylvania Scale Base to Indicator Connections:**

The 6600 carbon steel version comes with a round, CPC style connector that mates with all Pennsylvania Scale digital indicators. The stainless steel version 6600 comes with a pig tail end so that the load cell cable may be inserted through the watertight cable clamp used on the Pennsylvania Scale wash down indicators.

#### **Remote Base Connection**



Quick Disconnect CPC Connector



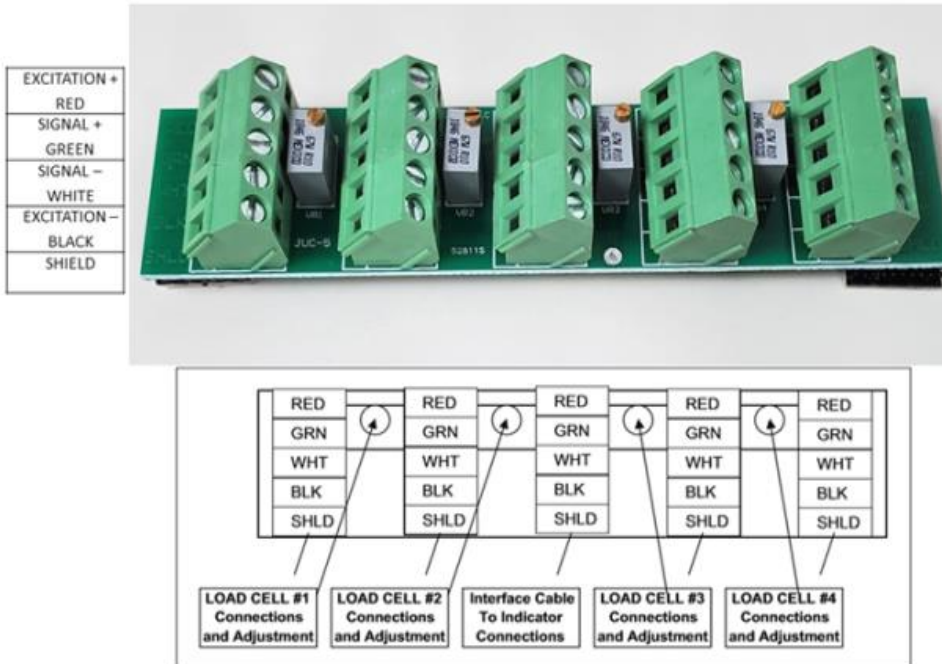
4 Wire Connection on P11 Jumper 8,7 & 6,5

#### **Internal Load Cell Connection**

6 – EX+, 5 – Sen+, 4 – Ex-, 3 – Sen-, 2 Sig-, 1 – Sig+

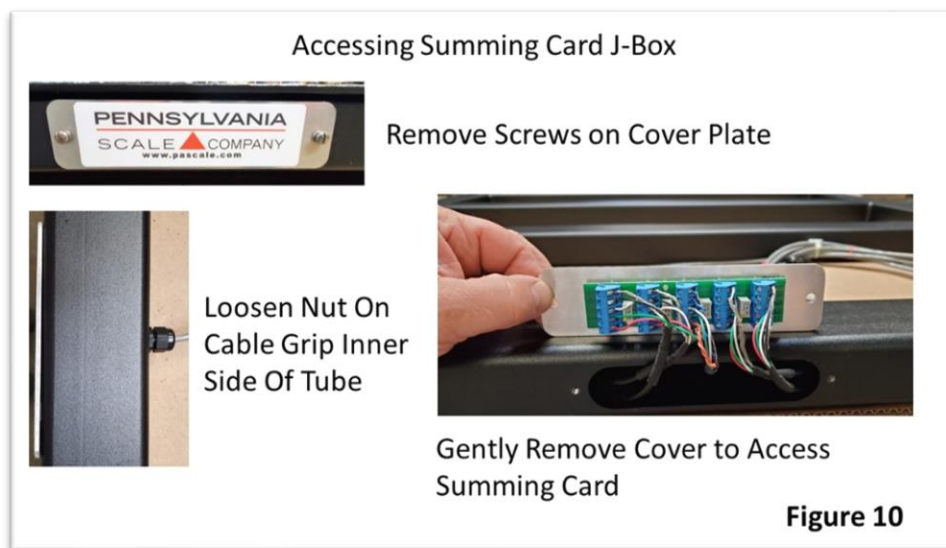
**Base Summing Card Connections:**

6600, 6900 & U6600 Summing Board P/N 57115



**Figure 9**

To access the junction box, remove the screws securing the small cover to the side of the base and gently pull the cover plate out.



## Load Cell Ratings

The 6600, 6900 and U6600 Series Base are available in capacities of 500 to 40,000 LB. The typical load cell sensitivity is 2 mv/v except 1,000 LB capacity, which is 1 mv/v.

## Calibration Instructions

Please refer to the calibration instructions for the digital indicator that will be used with the base.

## Basic Trouble Shooting

- ARE THE LEVELING FEET TURNED OUT AT LEAST 2 FULL TURNS?
- The load cells in the base have tested and corner compensated at the factory and should not require adjustment for installation. If the base is displaying inaccurate weight readings or corner weight errors, check the following before making potentiometer adjustments:
- Check the cable; is it wedged between the leveling feet and floor or in between the load cell and base structure?
- Is the base fully and firmly supported by the leveling feet? Does the base rock or tip if weight is placed on one corner?
- Are there any obstructions between the load cells and the leveling feet?
- Is the CPC connector firmly attached? Are the pins inside the connector bent or damaged?
- Is the Base to Indicator damaged, cut, or bent?

## Attaching A Ramp

Before attempting to attach the ramp to the base, extend the leveling feet to raise the height of the base as noted below:

- For 3" high ramps, adjust the base to 3 1/8"
- For 4" high ramps, adjust the base to 4 1/8"
- For 5" high ramps, adjust the base to 5 1/8"

Slide the ramp up beside the base 8" to 10" inches to the side. Line the ramp up so it is square with the base. Slide the ramp in so that the mounting bracket hooks onto the leveling feet. Side mounting brackets are provided to bolt the ramp to the floor if desired.

## Pit Installation

For pit installations please contact the Pennsylvania Scale for a Pit Plan or to Purchase a Pit Frame.

**Replacement Parts List**

<b>Part No:</b>	<b>Description</b>	<b>Notes</b>
57115	6600 4-cell Summing/Junction Board	Universal fit all 4 load cell systems; excitation trim
49737-6	M6600, M6900, ½=20 UNF, Plated, 2" base diameter, 2-1/2" high	Standard Floor Scales 1, 2, 5, and 10K up to 60" x 60" 10K capacity
49737-7	SS6600, SS6900, ½-20 UNF, SS, 2" base diameter, 2-1/2" high	SS Floor Scales 1, 2, 5, and 10K
49737-30	EVO ball-foot, Leveling Foot Assembly, ½-20 UNF, 2" base diameter, 1/2"-20 UNF Threads	Carbon Ball Foot w/SS slotted stud and wrench flats – fits 1, 2, 5, and 10K applications SESB load cells
49737-8	M6600 w/Forklift Option, ½-20 UNF, 2" base diameter, 3-3/4" high	MS Floor Scales 1, 2, 5, and 10K with Forklift application
49737-9	SS6600 w/Forklift Option, ½-20 UNF, 2" base diameter, 3-3/4" high	SS Floor Scales 1, 2, 5, and 10K with Forklift application
49737-18	M6600 (old style) ½-20 UNF, 3" base diameter, 2-7/8" high	Replaces M6600 with 3" base
49737-2	M6600 20K, 3/4-16 UNF, 3" base, 3-1/4" overall height	20K applications 5K/10K LE load cells
49737-4	SS6600 20K, 3/4-16 UNF, 3" base, 3-1/4" height	SS 20K applications 5K/10K LE load cells
49737-15	M6600 w/Forklift Option, 3/4-16 UNF, 3" base, 6" high	20K w/Forklift Option
49737-19	M6600 30/40K applications, 1-14 UNF, 3" base, 3-1/4" high	30K/40K scales with 1-14 UNF through hole at live end
49737-20	SS6600 30/40K applications, 1-14 UNF, 3" base, 3-1/4" high	SS 30K/40K scales with 1-14 UNF through hole at live end
48817-10E	10' Extension Cable for load cell extension	Mating connectors each end
48817-5*	20' Load Cell Cable assy. 6600	6600 applications – CPC connector assembled to 20' cable/tinned leads
48817-4	10' Load Cell Cable assy. 7X00	7X00 Bases
48817-30	30' Load Cell Cable assy. 6600	Standard cable – 30' length
48817-40	40' Load Cell Cable assy. 6600	Standard cable – 40' length
48817-50	50' Load Cell Cable assy. 6600	Standard cable – 50' length

**Non Washdown Load Cells**

<b>Part No:</b>	<b>Description</b>	<b>Notes</b>
49700-500	500 lbs. / 20' cable	Non-NTEP 65023-500-0107-10
49700-1	1000 lbs. / 10' cable	All 1K and 2K capacity scales 65023-A1K-5107-10
49700-2	2500 lbs. / 10' cable	All 5K scales 65023-2.5K-5107-10
49700-4	4000 lbs. / 10' cable	All 10K scales standard sizes 65023-4K-5107-10
49966-1	1000 lbs. / 20' cable	1K and 2K tank mounts, platforms > 60" x 60" 65023-1K-5107
49966-2	2500 lbs. / 20' cable	5K floor scales, also tank mounts 65023-2.5K-5107
49966-4	4000 lbs. / 20' cable	10K floor scales, also tank mounts 65023-4K-5107
49966-5SE	5000 lbs. / 20' cable SMALL ENVELOPE	Special order 10K bases, some competitors 10K scales, tank mounts 65023-5223
49966-5LE	5000 lbs. / 20' cable LARGE ENVELOPE	¾-16 UNF mount and through-hole replacement cell 65023-0107
49966-10 (LE)	10,000 lbs. / 20' cable LARGE ENVELOPE	¾-16 UNF mount and through-hole replacement cell – used in larger 20K capacity bases, tank mounts 65023-21K-0107
49966-20	20,000 lbs. / 20' cable	1-14 UNF mount and through-hole replacement cell – used in all 30K/40K applications
49700-500	500 lbs. / 20' cable	Non-NTEP 65023-500-0107-10

**Stainless Steel Washdown Load Cells**

<b>Part No:</b>	<b>Description</b>	<b>Notes</b>
49988-1	SS 1000 lbs. / 20' cable	65023S1K-5113
49988-2	SS 2500 lbs. / 20' cable	65023S2.5K-5113
49988-4	SS 4000 lbs. / 20' cable	65023S4K-5113
49988-10	SS 10K / 20' cable LARGE ENVELOPE	¾-16 UNF mount and through-hole replacement cell – used in larger SS20K capacity bases, tank mounts 65023S20K-5113
49988-20	SS20K / 20' cable	1-14 UNF mount and through-hole replacement cell – used in 30K/40K SS applications
57651-1 HERMETIC	SS Hermetically sealed cell, 1000 lbs. (small envelope)	65083S1K-5100
57651-2 HERMETIC	SS Hermetically sealed cell, 2500 lbs. (small envelope)	65083S2.5K-5100
57651-4 HERMETIC	20,000 lbs. / 20' cable	65083S4K-5100
49700-500	500 lbs. / 20' cable	Non-NTEP 65023-500-0107-10